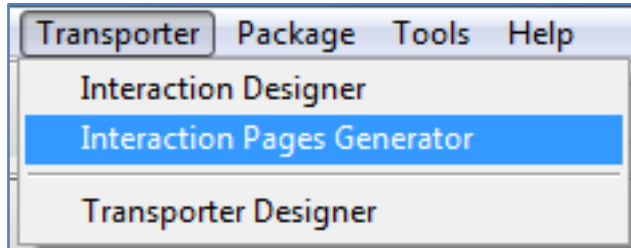
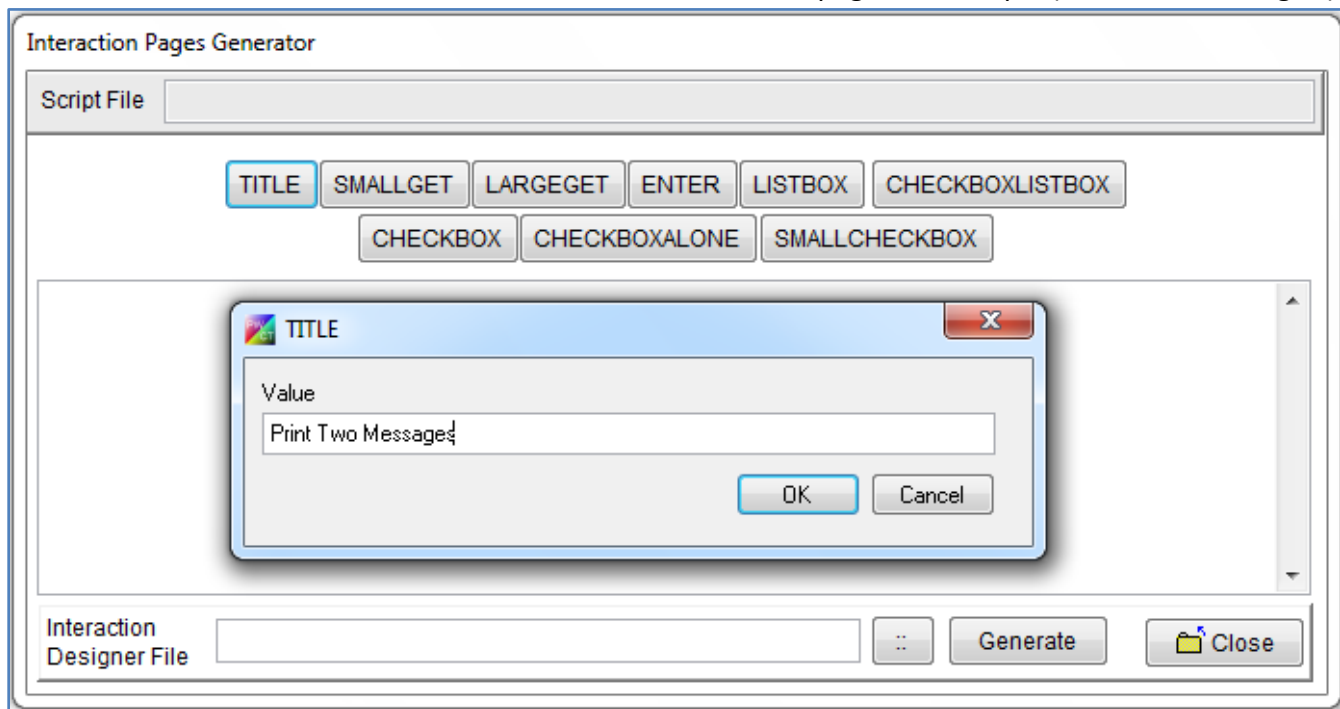


Creating New VPL (Visual Programming Language) for PWCT – Lesson (7)

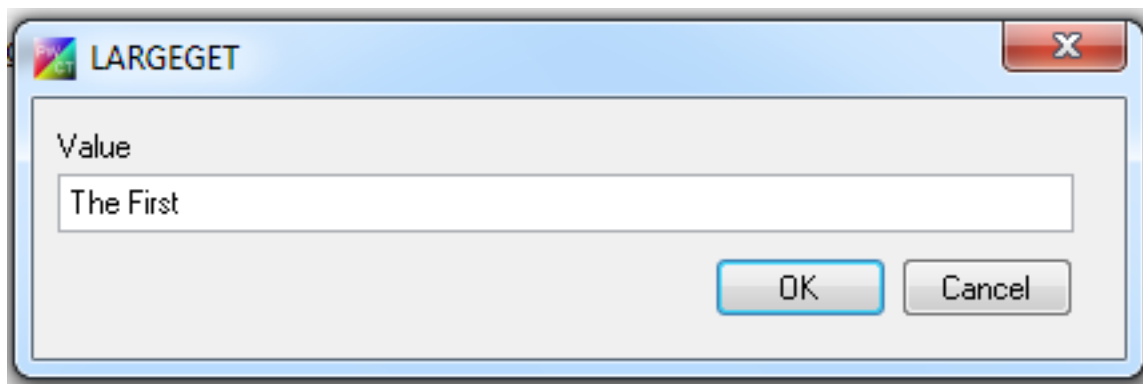
In this lesson we are going to learn how to create a step and a sub step and how to determine the step parent , at first we will use NewVPLPWCT and move to the **Transporter** menu then select **Interaction Pages Generator** to create a new interaction page which will print two messages .

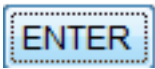
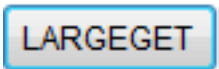


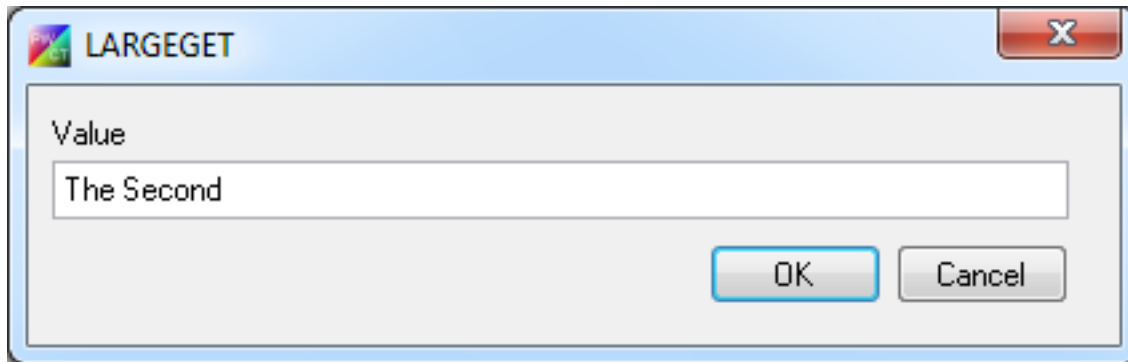
Click the **TITLE** button to determine the title of the interaction page for example (Print Two Messages)



Then click on the **LARGEGET** button to add a label and a textbox to determine the first message



Click on the ENTER button  , then click on the LARGEGET button  again to determine the second message



The dialog box titled "LARGEGET" has a "Value" label and a text input field containing "The Second". At the bottom right are "OK" and "Cancel" buttons.

Save the interaction script file in the folder **ISF(Interaction Script Files)** `SSBUILD\NewVPL\Components\ISF` and name it for example **(Step Parent .ISF)**

the generated interaction page will be saved into the folder **IDF(Interaction Designer Files)** `SSBUILD\NewVPL\Components\ISF` , name it for example **(Step Print .IDF)** , then click on the GENERATE button to generate the interaction page then close

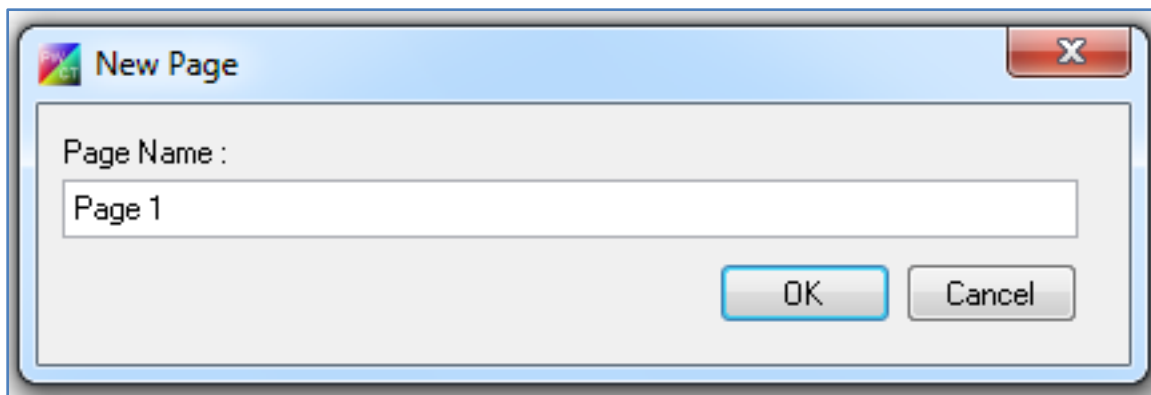
move to the interaction tab to open the interaction designer file **(Step Print .IDF)**



The window shows the file path `FILE(C:\SSBUILD\NEWVPL\COMPONENTS\IDF\STEP PARENT.IDF)`. The title is "Print Two Messages". On the left is a vertical toolbar with icons for text, table, and a checked checkbox. The main area has two rows: "The First" and "The Second", each followed by a text input field.

After clicking on the properties button you can see the first textbox variable is **(D_TB_The_First)** and the second text box variable is **(D_TB_The_Second)**

Now we will write the code mask ,go to the **Transporter** tab and add the interaction page **(page1)**



The dialog box titled "New Page" has a "Page Name :" label and a text input field containing "Page 1". At the bottom right are "OK" and "Cancel" buttons.



Select the interaction designer file (**Step Print .IDF**), then move to the **Code Mask** tab to write the code mask script

```
Code :  
  
<RPWI:NEWSTEP>Print Two Messages  
<RPWI:PUTMARK>2  
<RPWI:SETMARK>2  
<RPWI:NEWSTEP>The First Message  
<RPWI:PUTMARK>3  
<RPWI:SETMARK>3  
<RPWI:NEWSTEP>Message <T_First>  
<T_First>  
  
<RPWI:SETMARK>2  
<RPWI:NEWSTEP>The Second Message  
<RPWI:PUTMARK>4  
<RPWI:SETMARK>4  
<RPWI:NEWSTEP>Message <T_Second>  
<T_Second>
```

code for first step

code for second step

At first we will create a new step using the **<RPWI:NEWSTEP>** Command ,step name will be (**Print Two Messages**)

Now we want a sub step from this step so we will use the command **<RPWI:PUTMARK>2** to give a code for this step for example **(2)** , **Note you have determine the code from 2 to 20**

Determine the parent of the new step using the command **<RPWI:SETMARK>2**

Use the command **<RPWI:NEWSTEP>The First Message** to create the sub step which has the name(**The first Message**) from the parent step which has the name (**Print Two Messages**)

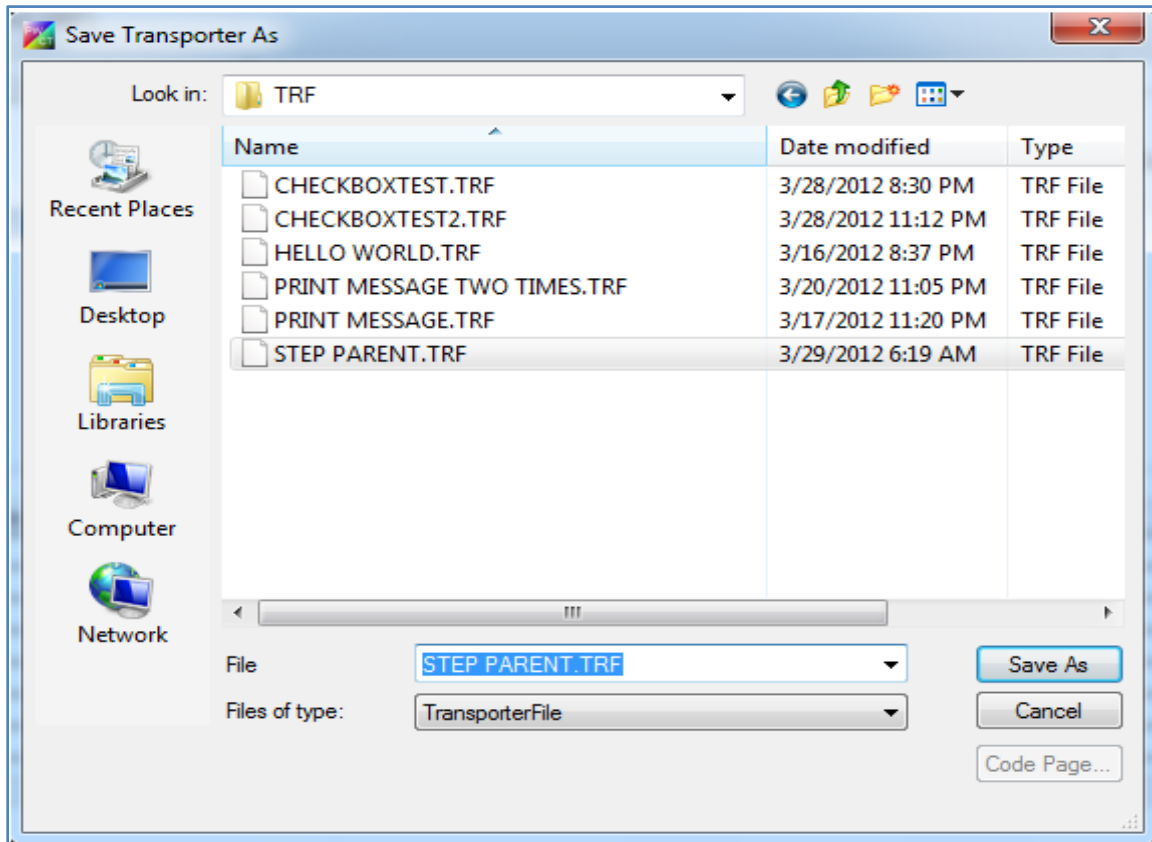
Inside the first message we will create another step that will be a child step use the command **<RPWI:PUTMARK>3** then **<RPWI:SETMARK>3** and then the command **<RPWI:NEWSTEP>Message <T_First>** to create the step

Use the **<T_First>** to print the first message

To determine the second message copy the code of the first message and change the code to **<RPWI:PUTMARK>4** and **<RPWI:SETMARK>4** also change the step title to the second message **<RPWI:NEWSTEP>The Second Message** finally change the variable to **<T_Second>**

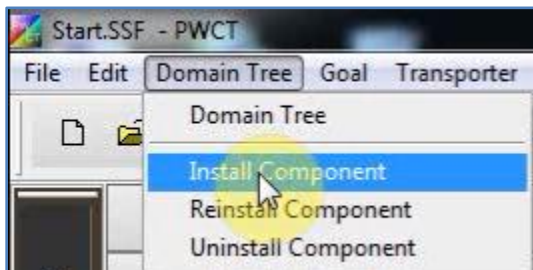
Now move to the matching tab to match between the variable from interaction page (**D_TB_The_First**) and the variable from the code mask (**T_First**), also match between the variable from interaction page (**D_TB_The_Second**) and the variable from the code mask (**T_Second**).

Then save the component into the (**TRF**) folder **C:\SSBUILD\NewVPL\Components\TR** and name it for example (steparent.TRF)



Now save and close

Now we will install the component to do this, click (**Domain Tree**) then select (**Install Component**)






Component name: StepParent test

Component file: C:\SSBUILD\NEWVPL\COMPONENTS\TRF\STEPPARENT.TRF

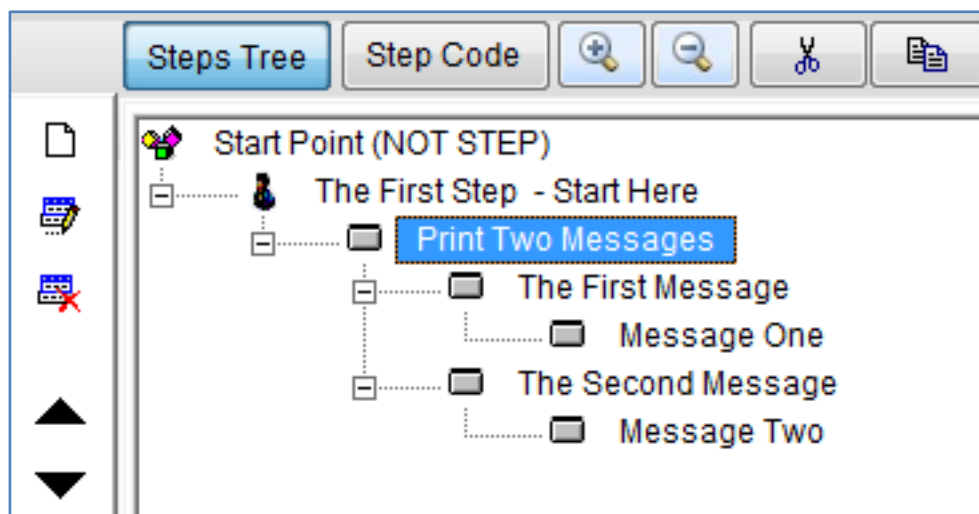
Domain: User Interface

The 'Install Component' dialog box contains three input fields: 'Name' with the value 'Step Parent Test', 'File' with the value 'C:\SSBUILD\NEWVPL\COMPONENTS\TRF\STEP PAREI', and 'Domain' with the value 'User Interface'. Each field has a browse button (three dots) to its right. At the bottom are 'Install' and 'Close' buttons.


Click install , and now it is the time for test our component

click interact  then select the User Interface domain then select **Step parent Test** , type your first message for example (One) and type your second message for example (Two) then press ok

The 'Print Two Messages' dialog box has a title bar showing the file path 'C:\SSBUILD\NEWVPL\COMPONENTS\IDF\STEP PARENT.IDF'. It contains two input fields: 'The First' with the value 'One' and 'The Second' with the value 'Two'.





Finally click on the button  to see the result

now we see the two messages on the browser

